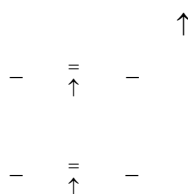
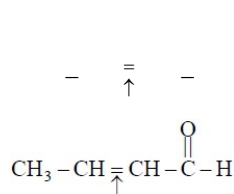
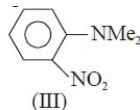
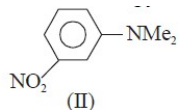
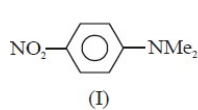
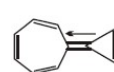
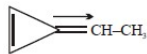
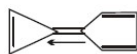
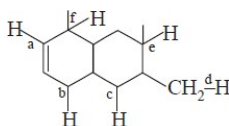
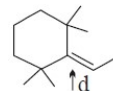
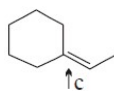
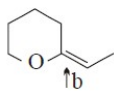
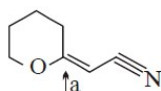
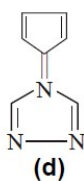
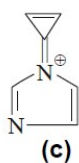
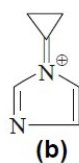
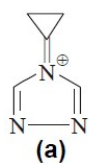
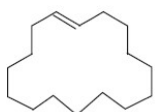
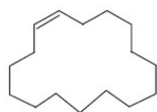
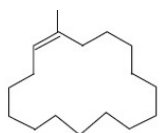
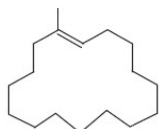


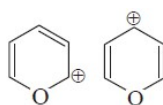
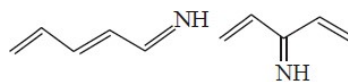
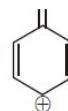
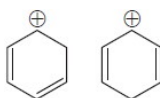
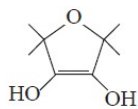
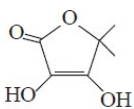
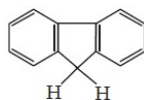
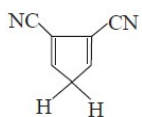
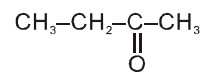
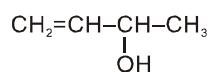
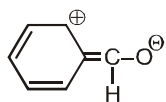
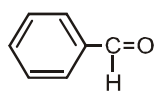
SINGLE CHOICE QUESTIONS

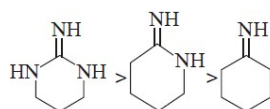
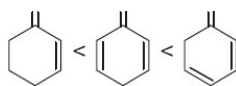
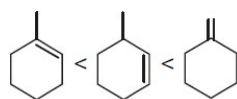
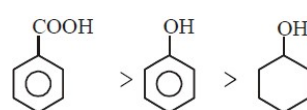
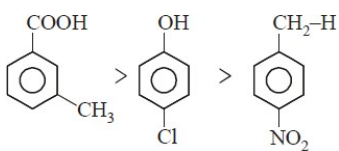
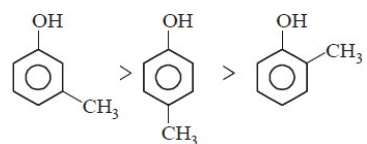
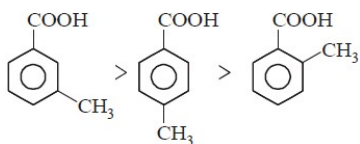
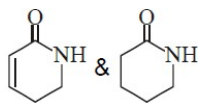
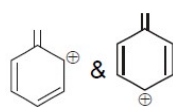
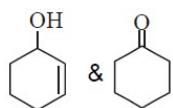
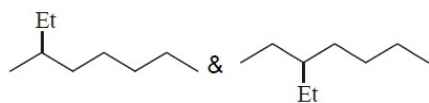
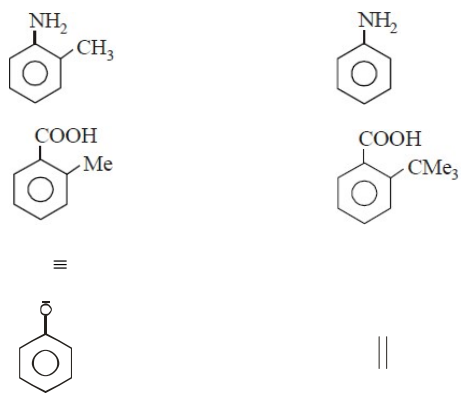




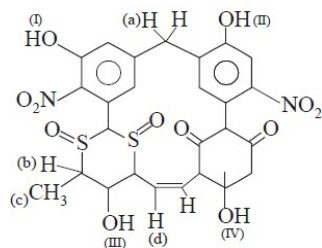
MULTIPLE CHOICE QUESTIONS

10.



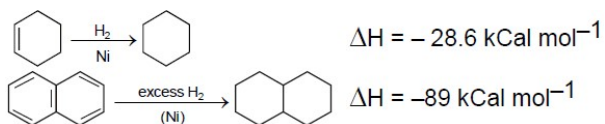
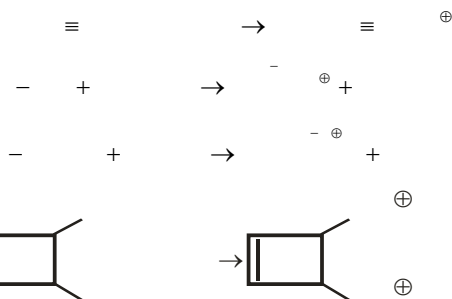
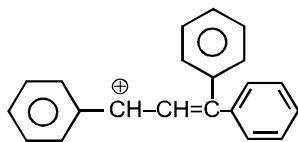


Paragraph for question nos. 17 to 19



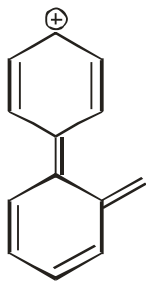
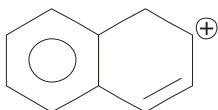
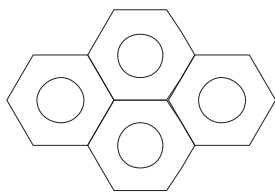
INTEGER ANSWER TYPE

20.



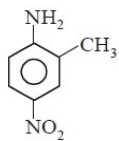
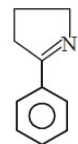
If answer of part (a) is xy and part (b) is pq then present your answer as xypq in the OMR sheet (round of your answer to nearest integers).

For example: if Answer of (a) is 12 and (b) is 13 you will fill 1213 in OMR sheet.



Column I

Column II



Column I
(Compounds)

Column II
(Magnitude of heat of hydrogenation)

